



SCAN HERE TO DOWNLOAD
OUR PRODUCTS CATALOGUE!



شركة حديد
الصناعية
التقنية العليا
HITECH
STEEL INDUSTRIES

STRIVING FOR GLOBAL EXCELLENCE, PIONEERING INNOVATIONS,
FOSTERING SUSTAINABILITY, AND ELEVATING SUCCESS.



AUTOMATION@HITECH.SA



WWW.AUTOMATIONS.A.COM



+966 555 015 798



HITECH
STEEL INDUSTRIES
INDUSTRIAL AUTOMATION

INDUSTRIAL AUTOMATION

REVOLUTIONIZE SAUDI ARABIA'S INDUSTRY
AND WAREHOUSING WITH HITECH
INDUSTRIAL AUTOMATION.



1ST EDITION

CONTENTS

03	INDUSTRIAL AUTOMATION
04	WHO WE ARE?
06	OUR DIVISIONS
08	OUR CUSTOMERS
09	WHAT WE PROVIDE?
10	PRODUCT CATEGORIES
12	WAREHOUSE
13	- RACKS
18	- PARTITIONS
30	AUTOMATION
31	- CUTTING AND NOTCHING MACHINES
35	- BENDING MACHINES
37	- WELDING MACHINES
38	- FENCING MACHINES
40	CONTACT US

Hitech Steel Industries: We offer comprehensive solutions to enhance security, optimize space, and control erosion. With a commitment to Saudi-made excellence and sustainability, we deliver a wide range of products and services through our diverse divisions. For more information, visit our website: www.hitech.sa

INDUSTRIAL AUTOMATION

STEP INTO THE FUTURE WITH
INDUSTRIAL AUTOMATION, LEADING
THE CHARGE IN REVOLUTIONIZING
SAUDI ARABIA'S INDUSTRIES AND
WAREHOUSING. DISCOVER BOUNDLESS
INNOVATION AND CUTTING-EDGE
SOLUTIONS, SETTING NEW STANDARDS
AT THE FOREFRONT OF EVOLUTION.

WHO WE ARE?



MUHAMMAD JAVED IQBAL

Chief Executive Officer

Striving for global excellence, pioneering innovations, fostering sustainability, and elevating success

HITECH STEEL INDUSTRIES

Established in 2008, Hitech Group progressively evolved into a dynamic conglomerate, seamlessly integrating pivotal divisions such as Nartel Contracting, Hitech Fence, Hitech Trading, and HAH services. Post the 2017 acquisition by Hitech Fence UK, we adeptly manage a diverse workforce, excelling in industrial, retail, and services sectors.

Our distinguished journey is unmistakably marked by continuous growth, innovation, fortifying and solidifying our influential position in the ever-evolving business landscape.

MAIN OBJECTIVES

- We utilize the finest materials and cutting edge technologies to ensure our Saudi-made products are built to last.
- We invest in our team's growth, learning, and leadership development.

WHY CHOOSE US?

Saudi-Made Excellence: We are proud to manufacture high-quality products in Saudi Arabia, fostering local expertise and contributing to the Kingdom's development.

Unwavering Commitment to Quality: Durability and reliability are at the core of our products, ensuring long-term value for your investment.

Sustainable Practices: We prioritize environmental responsibility, minimizing our impact and advocating for a greener future.

"Our mission is to stay committed to exponential company growth, relentlessly striving for unparalleled success year after year."

HITECH OPERATES IN GIVEN INDUSTRIES.



HITECH
STEEL INDUSTRIES
INDUSTRIAL AUTOMATION

INDUSTRIAL AUTOMATION

Hitech Industrial Automation offers comprehensive solutions for industry needs, from CNC machines and warehouse racks to logistics products. Additionally, we provide expert services for product manufacturing and finish coating, ensuring quality from start to finish.



HITECH
STEEL INDUSTRIES
RACKS & PARTITION

RACKS AND PARTITION

Hitech is the trusted choice across Saudi Arabia for commercial rack needs. Our partitions offer superior quality for various settings. Explore high-quality racks and partitions for homes and factories.



HITECH
STEEL INDUSTRIES
GABION

GABION

Development of Gabion basket products for both business-to-business (B2B) and business-to-consumer (B2C) markets, tapping into the demand for versatile and sustainable construction solutions.



HITECH
STEEL INDUSTRIES
FENCE & STEEL

FENCE & STEEL

Hitech Fence & Steel offers a complete range of fencing products, meeting aesthetic and security needs in Kingdom of Saudi Arabia. We also provide high-quality reinforced steel bars for construction.



HITECH
STEEL INDUSTRIES
BARRIER

BARRIER

Hitech Barrier secures your space with parking access and barrier solutions, locally designed and manufactured for enhanced security and aesthetics, including collaboration with solar gates for Instaboom and SOSEC barriers.



HITECH
STEEL INDUSTRIES
KEYCLAMPS

KEYCLAMPS

Developing a robust key clamp railing system for outdoor use, combining durability and aesthetic appeal. Catering to the growing demand for quality railing solutions in various outdoor settings.



HITECH
STEEL INDUSTRIES
SMART

E-SMART

Hitech specializes in designing, constructing, installing, and maintaining smart public toilets, renowned for pioneering self-cleaning and automatic designs. Committed to innovation, we seek cutting-edge solutions in technology and design.



HITECH
STEEL INDUSTRIES
BASICS

BASICS

Extending the product line to include basic consumer products for e-commerce initiatives. Aligning with the Saudi Vision 2030 by emphasizing the production of essential products locally.



HITECH
STEEL INDUSTRIES
RAILING

RAILING

Innovating and introducing a range of aluminum and stainless-steel indoor railing and staircase solutions. Ensuring both functionality and design aesthetics for residential and commercial spaces.

WE EXTEND OUR SINCERE GRATITUDE FOR YOUR TRUST AND SUPPORT. YOUR SATISFACTION DRIVES OUR DEDICATION TO EXCELLENCE. WE'RE HONORED TO SERVE YOU WITH TOP-NOTCH PRODUCTS AND EXCEPTIONAL SERVICE.

SIEMENS

SIEMENS

Siemens stands as a renowned global leader in technology, renowned for its innovation and advancements.

ERICSSON

ERICSSON

Creating game-changing technologies and services that shape our future that's what Ericsson do.



MOTOROLA

Motorola is a leading telecommunications company known for its mobile phones and infrastructure.



NEOM

NEOM is Leading the charge in Saudi Arabia's innovation and sustainability endeavors.



MOBILY

Etihad Etisalat Company, a Saudi telecom provider, offers fixed line, mobile, and internet services as Mobily.



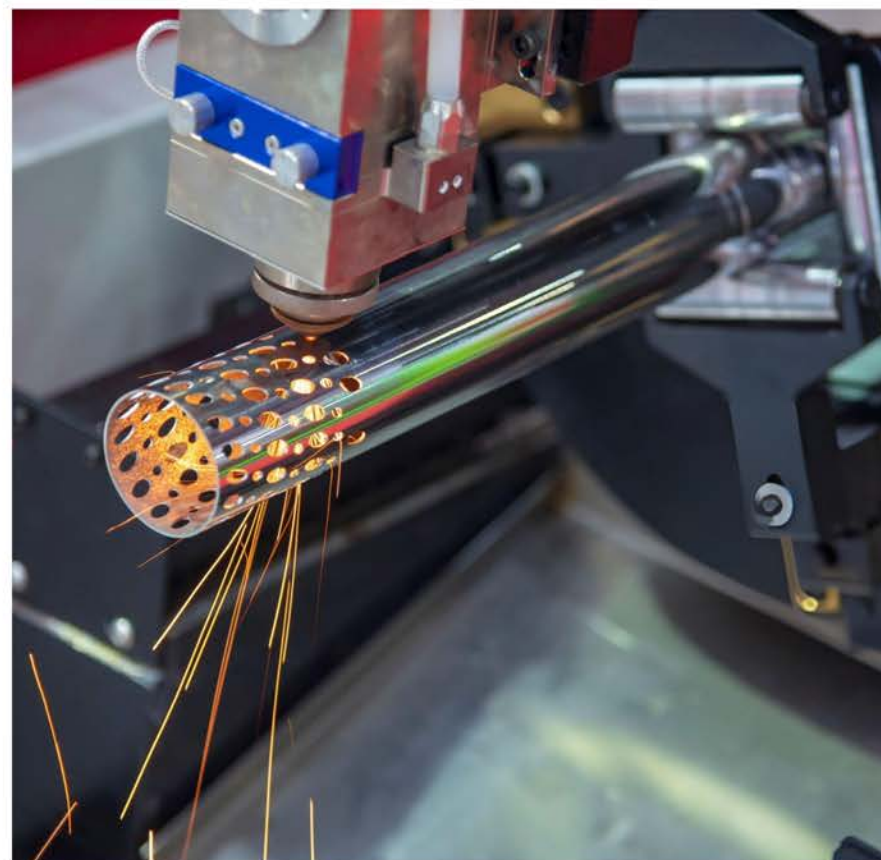
DGDA

Diriyah, a cultural and historical gem, is becoming a global destination for enthusiasts.

**OUR
VALUED
CUSTOMERS.**

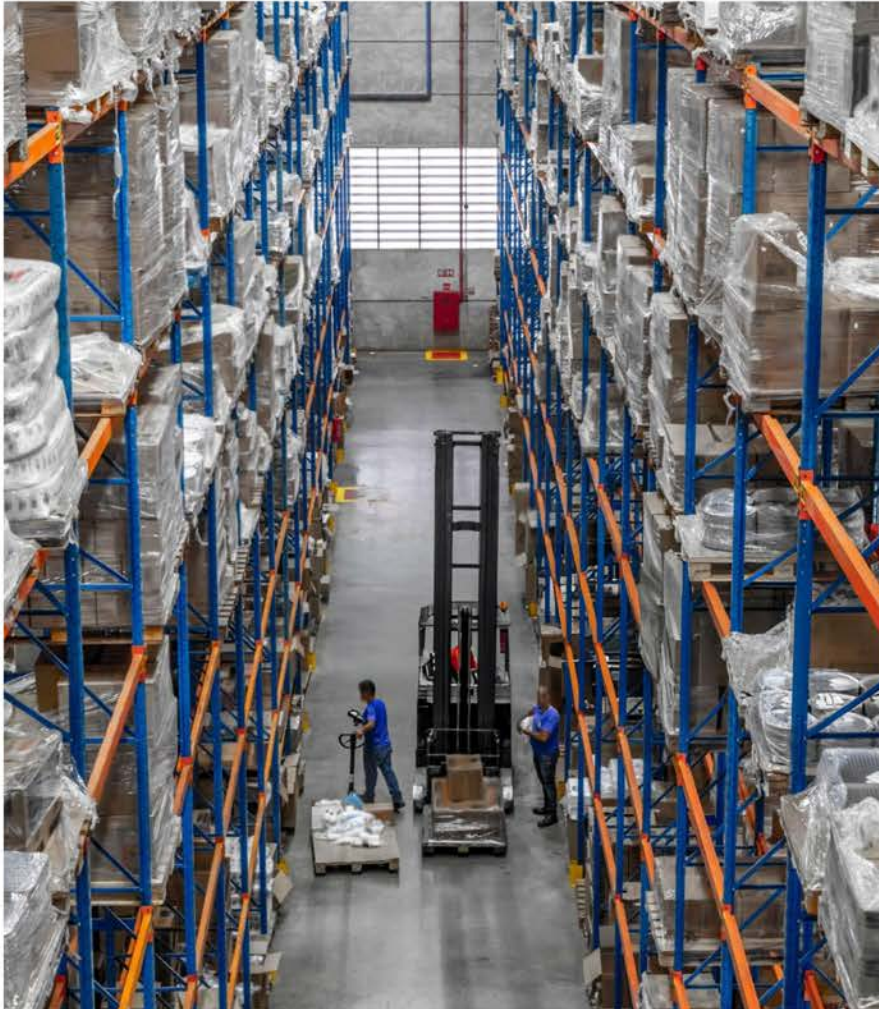
WHAT WE PROVIDE?

At Hitech Industrial automation, we offer a broad range of solutions tailored to meet the diverse needs of modern industry. Our CNC machines for steel manufacturing ensure precision and efficiency, encompassing cutting, bending, notching, and welding functionalities. Enhancing workplace safety, our partition cages provide robust machine guards, while our warehouse partitions offer versatile storage solutions. Choose from a variety of racks and logistics machines, including pallet stackers, to streamline operations. Moreover, our services extend beyond equipment provision – we specialize in product manufacturing and finish coating, ensuring top quality outcomes from start to finish. Experience the future of industry with Hitech Industrial Automation.



WAREHOUSE

At Hitech Industrial Automation, our warehouse products are designed to optimize storage and streamline operations. Our rack offerings encompass a wide range of products suitable for various warehouse types, complemented by partition systems for efficient space management. Additionally, our logistics devices, including pallet stackers, trucks, and autonomous robots, ensure seamless and automated operations in industrial environments.



10

INDUSTRY AUTOMATION HITECH

AUTOMATION PRODUCTS

Hitech Industrial Automation offers a diverse array of automation products. Our range includes cutting, bending, welding, taping, and fencing machines, addressing various industry needs. Our cutting machines, featuring smart laser cutters, ensure precision in manufacturing. We provide bending solutions from flat bar to bulk pipe bending machines. Specializing in advanced and CNC machines, we are committed to enhancing efficiency and productivity across manufacturing sectors. With our cutting edge technologies, we empower industries to meet evolving demands, optimizing efficiency and drive growth.



11

INDUSTRY AUTOMATION HITECH

WAREHOUSE

Efficiency matters. Consider storage needs, space, loading, and rack types. Hitech offers diverse solutions.

RACKS

In today's business landscape, efficiency and resource management are vital for Saudi companies. To address these challenges, storage racks and partitions are crucial. Before selecting racks, consider storage needs, space, loading capacity, and rack types. At Hitech, we offer diverse options to meet industrial standards for residential and commercial use, understanding the varied needs of industries.



BOLTLESS RACKS

Crafted for seamless organization in various settings, Boltless Racks feature a sturdy 1.5mm thick main pillar design for durability. The user-friendly boltless assembly system includes adjustable shelves, accommodating loads from 100 kg to 120 kg per level. Enjoy customizable dimensions and effortless assembly, making these racks ideal for diverse storage needs in offices, schools, kitchens, and more.

BULK RACKS

Introducing our Bulk Racks - the epitome of heavy-duty industrial storage solutions, engineered for remarkable load capacities from 200 to 1500kg per shelf. Featuring a seamless three-part design, these racks prioritize structural strength and easy assembly, catering to the diverse storage needs of warehouses, stockrooms, and large-scale industrial spaces. Specially designed for optimal storage solutions.

SLOTTED ANGLE RACKS

Presenting our Slotted Angle Racks, a flexible storage solution with L brackets for easy assembly, supporting 100 kg to 120 kg per shelf. Featuring adjustable height and durable steel shelves, these racks suit diverse settings. From warehouses and stock rooms to homes, kitchens, offices, retail stores, pharmacies, and libraries, Hitech Racks and Partitions offer versatile storage solutions for various needs.

PALLET RACKS

Introducing our Pallet Racking system, an industrial-grade storage solution engineered for heavy-duty applications. These racks are designed for vertical storage, offering efficiency and organization in warehouses, stockrooms, manufacturing facilities, distribution centers, construction sites, automotive storages, and heavy-duty storage environments. Customize configurations to meet specific storage requirements.



BOLTLESS RACKS

The Boltless Racks, crafted for seamless organization in offices, schools, kitchens, and more, these racks boast a robust 1.5mm thick main pillar design, ensuring durability. With user-friendly assembly, the boltless system features adjustable shelves that effortlessly slide into place, accommodating loads from 100 kg to 120 kg per level. Tailor your storage space with customizable dimensions and enjoy the convenience of easy assembly, making these racks a practical and efficient choice for diverse applications.

Article No.	Pillars	Rack Width	Rack Depth	Rack Height	Article No.	Pillars	Rack Width	Rack Depth	Rack Height
BR406318	40x40x1.5	600	300	1800	BR409621	40x40x1.5	900	600	2100
BR406618	40x40x1.5	600	600	1800	BR409324	40x40x1.5	900	300	2400
BR46321	40x40x1.5	600	300	2100	BR409624	40x40x1.5	900	600	2400
BR406621	40x40x1.5	600	600	2100	BR4012318	40x40x1.5	1200	300	1800
BR406324	40x40x1.5	600	300	2400	BR4012618	40x40x1.5	1200	600	1800
BR406624	40x40x1.5	600	600	2400	BR4012321	40x40x1.5	1200	300	2100
BR409318	40x40x1.5	900	300	1800	BR4012621	40x40x1.5	1200	600	2100
BR409618	40x40x1.5	900	600	1800	BR4012324	40x40x1.5	1200	300	2400
BR409321	40x40x1.5	900	300	2100	BR4012624	40x40x1.5	1200	600	2400



SLOTTED ANGLE RACKS

Introducing our Slotted Angle Racks - a versatile storage solution featuring L brackets with size of 76X76mm for assembly, offering load capacity of 100 kg to 120 kg per shelf. With adjustable height and steel shelves, these racks cater to diverse needs. Hitech Racks and Partitions provide a wide range of standards, from 300 to 6000mm depth, 600 to 1200mm width, and height variants from 1800 to 2400mm, offering adaptability for industrial to home applications. Specially designed for better structural strength and easy assembly for different applications.

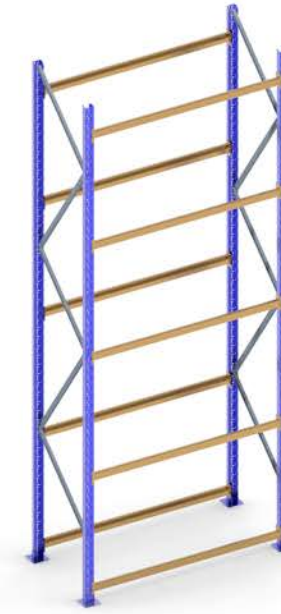
Article No.	Pillars	Rack Width	Rack Depth	Rack Height	Article No.	Pillars	Rack Width	Rack Depth	Rack Height
SA4063187	40x40x1.5	600	300	1800	SA4096217	40x40x1.5	900	600	2100
SA4066187	40x40x1.5	600	600	1800	SA4093247	40x40x1.5	900	300	2400
SA4063217	40x40x1.5	600	300	2100	SA4096247	40x40x1.5	900	600	2400
SA4066217	40x40x1.5	600	600	2100	SA40123187	40x40x1.5	1200	300	1800
SA4063247	40x40x1.5	600	300	2400	SA40126187	40x40x1.5	1200	600	1800
SA4066247	40x40x1.5	600	600	2400	SA40123217	40x40x1.5	1200	300	2100
SA4093187	40x40x1.5	900	300	1800	SA40126217	40x40x1.5	1200	600	2100
SA4096187	40x40x1.5	900	600	1800	SA40123247	40x40x1.5	1200	300	2400
SA4093217	40x40x1.5	900	300	2100	SA40126247	40x40x1.5	1200	600	2400



BULK RACKS

Introducing our cutting-edge Bulk Racks, the ultimate heavy-duty industrial storage solutions. Expertly engineered with remarkable load capacities ranging from 200 to 1500kg per shelf, these racks boast a seamlessly integrated three-part design that places a premium on both structural strength and effortless assembly. Customized to warehouses, stockrooms, and industrial spaces, Bulk Racks redefine storage efficiency and durability.

Artical No.	Pillars	Stem Beam	Rack Width	Rack Depth	Rack Height	No of Level
BR65186hL	60x50x1.5	50x50x1.5	1800	600	2400	2
BR65189hL	60x50x1.5	50x50x1.5	1800	900		
BR651812hL	60x50x1.5	50x50x1.5	1800	1200		
BR65216hL	60x50x1.5	50x50x1.5	2100	600	3000	3
BR65219hL	60x50x1.5	50x50x1.5	2100	900		
BR652112hL	60x50x1.5	50x50x1.5	2100	1200		
BR65246hL	60x50x1.5	50x50x1.5	2400	600	3600	4
BR65249hL	60x50x1.5	50x50x1.5	2400	900		
BR652412hL	60x50x1.5	50x50x1.5	2400	1200		
BR65276hL	60x50x1.5	50x50x1.5	2700	600	4500	5
BR65279hL	60x50x1.5	50x50x1.5	2700	900		
BR652712hL	60x50x1.5	50x50x1.5	2700	1200		
BR65306hL	60x50x1.5	50x50x1.5	3000	600	5400	6
BR65309hL	60x50x1.5	50x50x1.5	3000	900		
BR653012hL	60x50x1.5	50x50x1.5	3000	1200		



PALLET RACKS

Introducing our advanced Pallet Racking system, meticulously designed for heavy-duty industrial applications with the same precision as our acclaimed Bulk Racks. Engineered to prioritize vertical storage, these racks offer a robust and efficient solution, ensuring organized and streamlined operations for warehouses and large-scale storage environments. The system exemplifies durability, precision, and the utmost efficiency in managing substantial inventories with ease.

Artical No.	Pillars	Stem Beam	Rack Width	Rack Depth	Rack Height	No of Level
PR65186hL	60x50x1.5	50x50x1.5	1800	600	2400	2
PR65189hL	60x50x1.5	50x50x1.5	1800	900		
PR651812hL	60x50x1.5	50x50x1.5	1800	1200		
PR65216hL	60x50x1.5	50x50x1.5	2100	600	3000	3
PR65219hL	60x50x1.5	50x50x1.5	2100	900		
PR652112hL	60x50x1.5	50x50x1.5	2100	1200		
PR65246hL	60x50x1.5	50x50x1.5	2400	600	3900	4
PR65249hL	60x50x1.5	50x50x1.5	2400	900		
PR652412hL	60x50x1.5	50x50x1.5	2400	1200		
PR65276hL	60x50x1.5	50x50x1.5	2700	600	4800	5
PR65279hL	60x50x1.5	50x50x1.5	2700	900		
PR652712hL	60x50x1.5	50x50x1.5	2700	1200		
PR65306hL	60x50x1.5	50x50x1.5	3000	600	5700	6
PR65309hL	60x50x1.5	50x50x1.5	3000	900		
PR653012hL	60x50x1.5	50x50x1.5	3000	1200		

PARTITIONS

In today's technologically advanced industrial landscape, where robots and machinery streamline operations, occasional malfunctions can pose hazards. To address this, Hitech provides a partition system comprising panels attached to grounded posts, available for both machine guarding and warehouse partitioning. This system enhances safety and optimizes space management in warehouses. With six types available, Hitech ensures comprehensive solutions for maintaining warehouse safety and efficient space utilization.



HI30 MACHINE GUARDING

50x200 mm mesh wire welded on 30x30 frame with 2mm thickness.



HI20 MACHINE GUARDING

50x200mm mesh wire welded on 20x20 frame with 2mm thickness.



HI30 PARTITION PANEL

30x30 frame with 2mm thickness welded with 50x50 mesh.



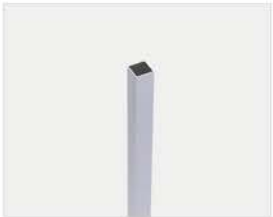
HI20 PARTITION PANEL

50x50 mesh welded on 20 mm square tube with 2mm thick frame.



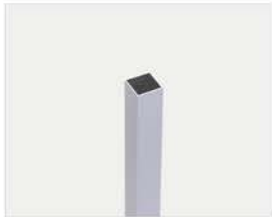
METAL SHEET

1mm metal sheet attached to 30 SQT frame.



HIT 50 X 50

50 SQT with 2mm thickness available up to 3.5 meter.



HIT 80 X 80

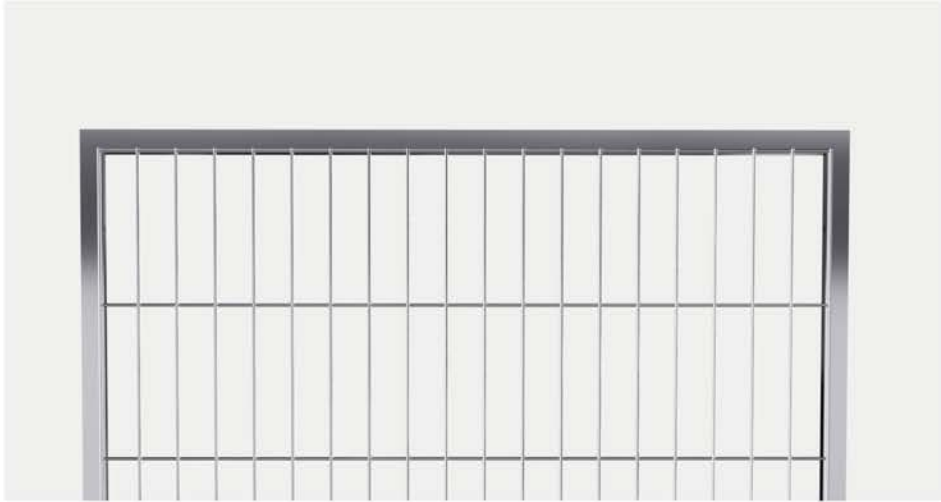
80x80 square tube with 2mm thickness available up to 8 meter.



HI30 MACHINE GUARDING

In machinery safety, the HI30 Machine Guarding Panel is a standout solution. Its frame, crafted from a 30x30 mm square hollow tube with 2mm thickness, ensures a robust housing. The welded mesh structure, formed from 4mm steel wire with a 50x200 mm mesh design, provides both visibility and protection. Customizable with various dimensions, including extensions, and finished with durable powder coating for a sleek aesthetic and added durability.

Artical No.	Component	Frame	Mesh Size (mm)	Height (mm)	Width (mm)
HiP352012530	Machine Guarding Panel	30x30x02	50x200	1250	300
HiP352020530	Machine Guarding Panel	30x30x02	50x200	2050	300
HiP352012550	Machine Guarding Panel	30x30x02	50x200	1250	500
HiP352020550	Machine Guarding Panel	30x30x02	50x200	2050	500
HiP352012570	Machine Guarding Panel	30x30x02	50x200	1250	700
HiP352020570	Machine Guarding Panel	30x30x02	50x200	2050	700
HiP3520125100	Machine Guarding Panel	30x30x02	50x200	1250	1000
HiP3520205100	Machine Guarding Panel	30x30x02	50x200	2050	1000
HiP3520125150	Machine Guarding Panel	30x30x02	50x200	1250	1500
HiP3520205150	Machine Guarding Panel	30x30x02	50x200	2050	1500
HiP3520125200	Machine Guarding Panel	30x30x02	50x200	1250	2000
HiP3520205200	Machine Guarding Panel	30x30x02	50x200	2050	2000
HiP3520125EXT	Extension Panel	30x30x02	50x200	1250	EXT
HiP3520205EXT	Extension Panel	30x30x02	50x200	2050	EXT



HI20 MACHINE GUARDING

Designed for machinery safety, its foundation lies in a 20x20 mm square hollow tube frame, fortified with a 2mm thickness, paired with a smartly welded 50x200 mm steel wire mesh for visibility and security. With customizable dimensions ranging from 300mm to 2000mm in width and 1250mm to 2050mm in height, it offers flexibility. The durable RAL black powder coating enhances longevity, while optional personalized finish coatings embody customized solutions.

Artical No.	Component	Frame	Mesh Size (mm)	Height (mm)	Width (mm)
HiP252012530	Machine Guarding Panel	20x20x2	50x200	1250	300
HiP252020530	Machine Guarding Panel	20x20x2	50x200	2050	300
HiP252012550	Machine Guarding Panel	20x20x2	50x200	1250	500
HiP252020550	Machine Guarding Panel	20x20x2	50x200	2050	500
HiP252012570	Machine Guarding Panel	20x20x2	50x200	1250	700
HiP252020570	Machine Guarding Panel	20x20x2	50x200	2050	700
HiP2520125100	Machine Guarding Panel	20x20x2	50x200	1250	1000
HiP2520205100	Machine Guarding Panel	20x20x2	50x200	2050	1000
HiP2520125150	Machine Guarding Panel	20x20x2	50x200	1250	1500
HiP2520205150	Machine Guarding Panel	20x20x2	50x200	2050	1500
HiP2520125200	Machine Guarding Panel	20x20x2	50x200	1250	2000
HiP2520205200	Machine Guarding Panel	20x20x2	50x200	2050	2000
HiP2520125EXT	Extension Panel	20x20x2	50x200	1250	EXT
HiP2520205EXT	Extension Panel	20x20x2	50x200	2050	EXT



HI30 PARTITION PANEL

The HI30 partition panel, designed for industrial applications, features a 30x30 mm square tube frame and a 4 mm diameter steel wire mesh welded to a 50x50 mm mesh size. Reinforced panels over 2 meters in height prevent deflection. Customizable dimensions and a durable RAL black powder coating ensure seamless integration into industrial spaces. Optional personalized finishes underscore Hitech's commitment to tailored solutions.

Artical No.	Component	Frame	Mesh Size (mm)	Height (mm)	Width (mm)
HiP35512530	Partition System Panel	30x30x02	50x50	1250	300
HiP35520530	Partition System Panel	30x30x02	50x50	2050	300
HiP35512550	Partition System Panel	30x30x02	50x50	1250	500
HiP35520550	Partition System Panel	30x30x02	50x50	2050	500
HiP35512570	Partition System Panel	30x30x02	50x50	1250	700
HiP35520570	Partition System Panel	30x30x02	50x50	2050	700
HiP355125100	Partition System Panel	30x30x02	50x50	1250	1000
HiP355205100	Partition System Panel	30x30x02	50x50	2050	1000
HiP355125150	Partition System Panel	30x30x02	50x50	1250	1500
HiP355205150	Partition System Panel	30x30x02	50x50	2050	1500
HiP355125200	Partition System Panel	30x30x02	50x50	1250	2000
HiP355205200	Partition System Panel	30x30x02	50x50	2050	2000
HiP355125EXT	Extension Panel	30x30x02	50x50	1250	EXT
HiP355205EXT	Extension Panel	30x30x02	50x50	2050	EXT



HI20 PARTITION PANEL

The Hi20 panel excel in warehouse, offering superior space management in partitions. Its robust 20x20mm steel frame, with 2mm thickness, ensures stability and resists deformation. Taller panels feature an additional support tube, doubling rigidity. The 4mm steel wire mesh, with a 50x50mm size, ensures visibility and security. Customizable dimensions and optional extensions adapt Hi20 seamlessly to diverse spaces, blending functionality with aesthetics in RAL black powder coating.

Artical No.	Component	Frame	Mesh Size (mm)	Height (mm)	Width (mm)
HiP25512530	Partition System Panel	20x20x2	50x200	1250	300
HiP25520530	Partition System Panel	20x20x2	50x200	2050	300
HiP25512550	Partition System Panel	20x20x2	50x200	1250	500
HiP25520550	Partition System Panel	20x20x2	50x200	2050	500
HiP25512570	Partition System Panel	20x20x2	50x200	1250	700
HiP25520570	Partition System Panel	20x20x2	50x200	2050	700
HiP255125100	Partition System Panel	20x20x2	50x200	1250	1000
HiP255205100	Partition System Panel	20x20x2	50x200	2050	1000
HiP255125150	Partition System Panel	20x20x2	50x200	1250	1500
HiP255205150	Partition System Panel	20x20x2	50x200	2050	1500
HiP255125200	Partition System Panel	20x20x2	50x200	1250	2000
HiP255205200	Partition System Panel	20x20x2	50x200	2050	2000
HiP255125EXT	Extension Panel	20x20x2	50x200	1250	EXT
HiP255205EXT	Extension Panel	20x20x2	50x200	2050	EXT



METAL SHEET

Our Panel with a 1mm thick metal sheet offers versatile safeguarding in dynamic industrial environments. Supported by a 30x30mm rectangular frame and additional central square pipe, it ensures structural integrity. With widths ranging from 200mm to 2000mm and heights from 1500mm to 2500mm, it fits diverse requirements. Ideal for warehouses and welding areas, its powder coating enhances durability, redefining safety with versatility, strength, and durability.

Artical No.	Component	Frame	Thickness (mm)	Height (mm)	Width (mm)
HiP3112530	Metal sheet Panel	30x30x02	1 mm	1250	300
HiP3120530	Metal sheet Panel	30x30x02	1 mm	2050	300
HiP3112550	Metal sheet Panel	30x30x02	1 mm	1250	500
HiP3120550	Metal sheet Panel	30x30x02	1 mm	2050	500
HiP3112570	Metal sheet Panel	30x30x02	1 mm	1250	700
HiP3120570	Metal sheet Panel	30x30x02	1 mm	2050	700
HiP31125100	Metal sheet Panel	30x30x02	1 mm	1250	1000
HiP31205100	Metal sheet Panel	30x30x02	1 mm	2050	1000
HiP31125150	Metal sheet Panel	30x30x02	1 mm	1250	1500
HiP31205150	Metal sheet Panel	30x30x02	1 mm	2050	1500
HiP31125200	Metal sheet Panel	30x30x02	1 mm	1250	2000
HiP31205200	Metal sheet Panel	30x30x02	1 mm	2050	2000
HiP31125EXT	Metal sheet Panel	30x30x02	1 mm	1250	EXT
HiP31205EXT	Metal sheet Panel	30x30x02	1 mm	2050	EXT

HIT 50 X 50

Our Machine Guarding and Partition System Post, made from high-grade mild steel, offers strength, durability, and customization. With a 50x50 square tube and 2mm wall thickness, it ensures solid panel integration. Featuring 4 standard heights (1400mm to 3450mm) and customizable options, it suits diverse needs. Welded base plates provide stability, while powder coating ensures rust resistance and aesthetic appeal. In short, our posts deliver integrity, adaptability, and safety.



For securing panels to the Square tube 50 post with 2mm thickness, Hitech provides square shaped fixing clamps made from 3mm plate. These clamps slide easily through the top side of the post, allowing for simple nut and bolt attachment to secure the post. M10 bolts pass through the frame of the panels which will be attached to nuts welded inside the clamp, ensuring a secure connection and stability.

The SQT 50 post is securely anchored to the ground using a sturdy baseplate provided by Hitech. This baseplate, measuring 120x120 and crafted from 5mm thick material, ensures a stable foundation for the post. The post is welded onto the baseplate, and ribs are employed to reinforce this connection, enhancing stability and durability. Anchor bolts are then utilized to securely attach the baseplate to the ground.



Artical No.	Component	Dimension	Thickness (mm)	Base Plate (mm)	Height (mm)
HIT5220140	Square Hollow Post	50x50	2	120x120x5	1400
HIT5220220	Square Hollow Post	50x50	2	120x120x5	2200
HIT5220265	Square Hollow Post	50x50	2	120x120x5	2650
HIT5220345	Square Hollow Post	50x50	2	120x120x5	3450

HIT 80 X 80

Designed with precision, our Machine Guarding and Partition System Post surpasses industrial standards. Constructed from ASTM 500 standard mild steel, it features an 80x80 square tube with 2mm wall thickness for strength and durability. Offering 7 height options ranging from 3.5 to 8 meters, it meets diverse industrial needs. Adjustable brackets allow for versatile fixing, while a welded base plate ensures stability and prevents bending. Elevate industrial safety with our customizable post solution.



Fabricated from robust 5mm plate material, Hitech's fixing clamps are specifically engineered for fastening panels to the SQT 80 post, boasting a 2mm thickness. These square-shaped clamps smoothly slide through the upper section of the post, facilitating straightforward attachment using nuts and bolts. M12 bolts traverse the frames of the panels, connecting to internally welded nuts within the clamp, ensuring a steadfast connection.



200x200mm with 10 mm thickness of the base plate provides secure anchoring for the post. Reinforced by ribs, it strengthens the connection between the post and plate, ensuring stability and durability in demanding industrial environments where structural integrity is essential.

Artical No.	Component	Dimension	Thickness (mm)	Base Plate (mm)	Height (mm)
HIT8220390	Square Hollow Post	80x80	2	200x200x10	3900
HIT8220425	Square Hollow Post	80x80	2	200x200x10	4250
HIT8220470	Square Hollow Post	80x80	2	200x200x10	4700
HIT8220550	Square Hollow Post	80x80	2	200x200x10	5500
HIT8220630	Square Hollow Post	80x80	2	200x200x10	6300
HIT8220675	Square Hollow Post	80x80	2	200x200x10	6750
HIT8220800	Square Hollow Post	80x80	2	200x200x10	8000

LOGISTICS

In the modern era of industrialization, efficient logistics are paramount for warehouses. Challenges arise in transporting goods and optimizing storage. Hitech provides solutions with locally manufactured electric-powered pallet stackers and trucks, featuring hydraulic operation. Expanding their offerings, Hitech has acquired distribution rights from TuskRobots, aiming to revolutionize logistics in Saudi Arabia. This strategic partnership holds promise for optimizing operations and bolstering efficiency in Saudi Arabia's industrial sector.

STANDING PALLET STACKER

Electric-powered pallet trucks, with rechargeable batteries, transform material handling in warehouses. Their intuitive controls and agile maneuverability boost operational efficiency. Businesses favor these trucks for convenience and eco-friendliness, emitting zero emissions and reducing fossil fuel reliance. Committed to sustainability, electric-powered pallet trucks offer a solution for modern material handling challenges, ensuring smoother workflows and minimal environmental impact.

LOAD CAPACITY	2000KG
MAX LIFT HEIGHT	3000MM
MIN FORK HEIGHT	90MM
DRIVING MOTOR	1500W
LIFTING MOTOR	2500W
BATTERY	24V/210AH
POWER SOURCE	DC
FORK LENGTH	1000MM
OUTER WIDTH OF FORK	680MM
OVERALL DIMENSION	2330 X 800 2330MM
DRIVING SPEED (FULL LOAD / NO LOAD)	4.0KM/H - 6.0KM/H
LIFTING SPEED (FULL LOAD / NO LOAD)	0.08M/S - 0.13M/S



FEATURES:

- SAFETY FEATURES
- BATTERY OPERATION
- MANEUVERABILITY
- VERSATILITY
- ENVIRONMENT FRIENDLY



PALLET TRUCK

Introducing our pallet trucks: the indispensable backbone of efficient material handling in warehouses and factories. Engineered for enduring durability and effortless operation, they guarantee seamless transport of goods with minimal exertion. Elevate your productivity with our reliable pallet trucks, meticulously crafted to meet the exacting demands of modern industry. Trust in our pallet trucks to streamline your operations and enhance efficiency in every aspect of your business operations and endeavors, ensuring optimal success.

FEATURES:

- SAFETY FEATURES
- BATTERY OPERATION
- MANEUVERABILITY
- VERSATILITY
- ENVIRONMENT FRIENDLY

LOAD CAPACITY	2500KG
MAX LIFT HEIGHT	200MM
MIN FORK HEIGHT	85MM
DRIVING MOTOR	800W
LIFTING MOTOR	800W
BATTERY	48V/20AH
POWER SOURCE	DC
FORK LENGTH	1100/1200MM
CHARGER	220V
WEIGHT	235KG

EXCLUSIVE DISTRIBUTION RIGHTS

Hitech has gained exclusive distribution rights with Tusk robots, a prominent Chinese manufacturer, to advance Industry 4.0 logistics. Tusk robots' innovative products streamline handling processes in smart factories worldwide.



E10
Streamlined handling for 1000x1200mm plastic pallets. Advanced obstacle detection.



E08
Designed for EPAL Euro pallets. Maneuverable in 1700mm aisles. Advanced obstacle detection.



E10 (ARCTIC)
Waterproof structure and electronics. Rated load: 1000kg. Dimensions: 1233x1102x170mm.



E10 (TITAN)
Handles up to 1.5 tons, with spinning APR. Maximum speed: 1.5m/s.



TUSKE
Compatible with National and European Standard Pallets. Lifts up to 800kg. Stop accuracy: ±5mm/±1°.



C-SERIES ROBOT
Handles up to 1000kg with electric lifting. Maximum speed: 1.5m/s. Stop angle accuracy: ±5mm/±1°.



INDUSTRIAL FLOOR TILES

Introducing our Industrial Floor tiles, also known as Ecotiles, versatile flooring solutions for various industries. They offer sustainability, durability, and easy installation, perfect for high-traffic areas like warehouses and factories. Crafted from recycled or sustainable materials, they promote environmental conservation. With interlocking designs, they require no adhesives or specialized tools for installation, ensuring convenience. Safety features include slip resistance and shock absorption.

	Smooth	Raised Disk
Dimension	500x500mm	500x500mm
Thickness	6.8mm +/- 0.3mm	7.6mm +/- 0.3mm
Weight	8.86kgs/m ²	9.1kgs/m ²
Anticipated service life	25 Years +	25 Years +
Material	PVC	PVC
Joint	Dovetail	Dovetail
Slip Resistance	Pass, R10	Pass, R10
Stain Resistance	Good	Good
Mechanical Resistance	17N/mm ²	17N/mm ²
Resistance to Hot Objects	Good	Good
Thicness of wear layer	6 to 10mm	6 to 10mm

AUTOMATION

Hitech meets Saudi Arabia's industrial needs with laser cutting, angle cutting, punching, and band saw solutions.

CUTTING & NOTCHING

Within the domain of automation, Cutting and Notching represent pivotal processes necessitating precision and efficiency. Hitech responds to Saudi Arabia's industrial expansion with a varied range of solutions: laser cutting machines, angle cutters, punching hole machines, and band saws. From intricate cuts to bulk operations, Hitech guarantees excellence in meeting industrial demands.



LASER CUTTING MACHINE

Explore the unparalleled versatility of our sheet metal and tube fiber laser cutting machine. Designed to simplify material cutting tasks for you and your team, our laser metal pipe and sheet cutting machine is an indispensable high-precision tool in manufacturing and metalworking industries. It excels at cutting metal pipes, tubes, and sheets with exceptional accuracy and efficiency, leveraging advanced laser technology.

FEATURES:

- FIBER LASER SOURCE
- DUAL CUTTING CAPABILITY
- CNC CONTROL SYSTEM
- ROTARY AXIS ATTACHMENT
- INTEGRATED SOFTWARE
- REAL TIME MONITORING
- SAFETY FEATURES

WORKING AREA	1515X3030MM
LASER POWER	6000W
X-AXIS/Y-AXIS/Z-AXIS TRAVEL	1515MM/3030MM/370MM
X-AXIS/Y-AXIS/Z-AXIS MOTOR POWER	850W/1300W/400W
POSITIONING ACCURACY OF X / Y AXIS	±0.03MM
REPEATED POSITIONING ACCURACY OF X / Y AXIS	±0.02MM
TUBE DIAMETER	10-22/15-150MM SQT
TUBE WORKING LENGTH	6000MM
CLAMP MODE	PNEUMATIC
MAXIMUM SPEED	140M/MIN
MAXIMUM ACCELERATION	1.5G
VOLTAGE	380V 3PH 50/60HZ
TOTAL POWER PROTECTION LEVEL	IP54



ANGLE NOTCHING MACHINE

Our hydraulic-powered angle notching machine delivers precise 90-degree notches efficiently, setting the standard for versatility and reliability. With advanced hydraulic technology and robust construction, it ensures seamless operation across various materials. Operating at 380V, it offers a 20-ton pressure capacity, ideal for materials below 3mm thickness. Equipped with two hydraulic presses, it guarantees efficient and accurate results for industrial applications.

FEATURES:

- HYRDAULIC POWER
- PRECISION CONTROL
- EASE OF USE
- VERSATILE ANGLE CUTTING
- DURABLE CONSTRUCTION

VOLTAGE	380
EQUIPMENT FUNCTION	CORNER CUTTING
PUNCHING THICKNESS	BELOW 3MM
TYPE	SEMI AUTOMATIC HYDRAULIC
WEIGHT	400KG
PRESSURE	20 TONS
SIZE	800X750X1500MM
STROKE	120MM
PROCESSING SPEED	1-2 SECONDS



PUNCH HOLE MACHINE

Introducing our Punch Hole Machine, vital for precise and efficient hole punching in metal pipes. Streamlining manufacturing processes, it enhances product quality. With user-friendly operation, it includes a 50-liter fuel tank, 1000x620x1400mm dimensions, and processes materials up to 3mm thick. Weighing 300kg, it's durable and reliable. This hydraulic-powered machine operates at 380V, with a 130mm cylinder stroker and 30-ton nominal pressure, ensuring accurate hole punching controlled via pedal.

FEATURES:

- HYDRAULIC POWER
- PRECISION HANDLING
- USER-FRIENDLY HANDLING
- DIVERSE PUNCHING CHOICES
- RESILIENT FRAMEWORK

CYLINDER STROKER	130MM
INPUT POWER SUPPLY	380V
TRANSMISSION MODE	HYDRAULIC
NOMINAL PRESSURE	30 TONS
CONTROL MODE	PEDAL
FUEL TANK CAPACITY	50 LITERS
EQUIPMENT SPECIFICATION	H 1400 X W 620 X L 1000 MM
MAXIMUM PROCESSING THICKNESS	3MM
WEIGHT	300KG



BAND SAW MACHINE

Presenting our Metal cutting Band Saw Machine, a versatile tool for precision cutting in metalworking industries. Utilizing CNC technology, it automates and controls the cutting process for accuracy and consistency. Programmable cutting patterns enhance productivity, while safety measures ensure operator protection. Regular maintenance ensures optimal performance, making it ideal for high-volume production environments. Efficiently cuts bundles of different diameter pipes, SHS, and RHS Tubes.

FEATURES:

- NIC CONTROL
- PROGRAMMABLE CUTTING PATTERN
- VARIABLE CUTTING SPEED
- AUTOMATIC BLADE TENSIONING
- BLADE GUIDES
- SAFETY

CUTTING CAPACITY(MM)	500/500X600 MM
BLADE SPEED(M/MIN)	23/44/71
BLADE SIZE(MM)	41×1.3×5640
MAIN MOTOR(KW)	4/6P
HYDRAULIC MOTOR(KW)	1.5
WORK-PIECE CLAMPING	HYDRAULIC VISE
BLADE TENSION	MANUAL
MATERIAL FEED	AUTO
FEEDING LENGTH	1000MM
MACHINE SIZE	2600×2200×2000
NC CONTROL	YES
SAW FRAME HEIGHT SELECTOR GAUGE	AUTOMATIC WORK HEIGHT CONTROL

BENDING MACHINE

In manufacturing, bending processes shape sheet metal with precision and power. Hitech offers hydraulic-powered bending machines, including flat bar and pipe bending models. The flat bar bender employs hydraulic strokes for up to 5mm thickness, while our pipe bending machine have the capacity to create bend up to 180mm radius.



FLAT BAR BENDING MACHINE

Our Flat Bar Bending Machine is a versatile tool for metalworking industries. Essential for shaping precise flat metal bars, it offers flexibility, efficiency, and accuracy. With capacities ranging from 15mm to 50mm and a feeding speed of 55 meters per minute, it ensures efficient processing. Equipped with hydraulic and CNC control systems, it offers automated operation and precise bending.

FEATURES:

- FLAT BAR CAPACITY
- BENDING MECHANISM
- ADJUSTABLE ROLLERS
- CONTROL SYSTEM
- SAFETY FEATURES
- VERSATILITY

FLAT WIRE	15-50MM
FEEDING FLAT WIRE SPEED	55METER/MIN
MAX BENDING SPEED	800/SEC
PROCESSING THICKNESS	1MM-5MM
MAX/MIN EDGE LENGTH	5000/30MM
FEEDING WIRE MOTOR	3KW
BENDING MOTOR	3KW X2
EXPANSION AND CONTRACTION SERVO MOTOR	0.75KW
HYDRAULIC	5.5KW
PUNCHING OIL CYLINDER	125 X 30
CUT OFF THE OIL CYLINDER	150 X 50
MAIN OIL PUMP	VANE 25 PUMP
DIMENSION	2200 X 1500 X 1700 MM



PIPE BENDING MACHINE

Our Pipe Bending Machine is essential for bending pipes to precise specifications. Widely used in automotive, aerospace, construction, and manufacturing industries, it offers versatility, precision, and efficiency. With advanced software and servo-driven hydraulic systems, it performs complex bends with minimal operator intervention. Its self-diagnostic system enhances safety and operational efficiency by continuously monitoring machine parameters and detecting abnormalities in real-time.

FEATURES:

- FULLY AUTOMATIC
- SERVO MOTOR PROGRAMMABLE AXIS
- IMPORTED HYDRAULIC SYSTEM
- AUTOMATIC LUBRICATION SYSTEM
- SELF-DIAGNOSTIC SYSTEM
- ELECTRIC CABINET COOLING FAN
- TOUCH SCREEN & HUMAN/ MACHINE INTERFACE

MAX BENDING CAPACITY	Φ38MMX2MM
MAX BENDING RADIUS	R180MM
MAX BENDING DEGREE	190°
MAX FEEDING LENGTH	4000MM
WORKING BENDING SPEED	MAX 90°/S
WORKING ROTARY SPEED	MAX 160°/S
WORKING FEEDING SPEED	MAX 1200MM/S
ACCURACY	±0.1°
BENDING METHOD	HYDRAULIC BENDING (2A)
HYDRAULIC MOTOR POWER	5.5KW
FEEDING SERVO MOTOR POWER	750W
ROTARY SERVO MOTOR POWER	400W
MAX STORAGE UNIT	1000GROUPS
MAX OIL PRESSURE	14MPA
MACHINE SIZE	5200X1000X1700MM

WELDING

In the welding domain, Hitech introduces the advance Laser Machine, offering versatility for welding, cutting, rust cleaning, and weld seam cleaning. This multifunctional tool manufactured to various manufacturing and maintenance needs, providing comprehensive support in a single solution.



SMART LASER MACHINE

Introducing our 4-in-1 Laser Machine, revolutionizing material cutting, welding, rust, and weld seam cleaning. Enhancing efficiency and quality, it optimizes space and resources with its multifunctionality. Consider laser power, speed, material compatibility, and ease of use. With a maximum power of 1500W and a compact design, it ensures reliable operation and easy installation. Versatile welding, cutting, rust cleaning, and weld seam capabilities cater to diverse manufacturing needs.

FEATURES:

- WELDING
- CUTTING
- RUST CLEANING
- WELD SEAM CLEANING

MAX LASER POWER	1500W
LASER SOURCE	RAYCUS BRAND
LASER WELDING HEAD	RAYTOOLS BW101
STANDARD VOLTAGE	220V 60HZ SINGLE - PHASE
CARBON STEEL WELDING WIRE	10X1MM+5X1.2MM+5X0.8MM
PACKING SIZE	1350X750X1450MM
LASER WAVELENGTH	1070MM
PULSE FREQUENCY	1-500HZ
WIRE FEEDING	AUTOMATIC
COOLING TYPE	CHILLER
PACKING WEIGHT	500KG/530KG

FENCING

In the fencing industry, Hitech presents the cutting-edge Fencing Solution, delivering versatility for fence installation, repair, and maintenance. This multifunctional system caters to diverse fencing requirements, offering comprehensive support for various applications in a single solution.



AUTOMATIC CHAIN LINK FENCE MACHINE

Presenting our PLC Controller Double Wire Automatic Chain Link Fence Machine, designed for precise, high-speed production. With advanced PLC automation, it offers customization for wire tension, mesh size, and fence length. Its double wire feeding system enhances efficiency. Produces variable mesh sizes and wire diameters, with automatic functions for wire feeding, cutting, and twisting. Comprehensive safety features include emergency stop buttons for operator protection.

FEATURES:

- PLC CONTROLLER
- DOUBLE WIRE WEAVING
- AUTOMATIC WIRE FEEDING
- MESH CUTTING SYSTEM
- USER-FRIENDLY INTERFACE
- HIGH PRODUCTION SPEED
- ROBUST CONSTRUCTION

FEEDING WIRE NO.	DOUBLE WIRE
WIRE DIAMETER (MM)	1.8 - 4.2 (PVC COATED WIRE CAN MAX 5MM)
MESH HOLE SIZE (MM)	52MM/62MM/72MM
OUTPUT (M ² /HOUR)	P3000
RATED VOLTAGE	80-160
MOTOR POWER	AS DESIGN
DIMENSION	4.85X1.15X2.35M / 1.9X1.22.3M / 1.2X1.0X0.8M



BARBED WIRE MACHINE

Introducing our Normal Double Twisted Barbed Wire Machine, vital for manufacturing double twisted barbed wire, renowned for perimeter security. This machine efficiently twists galvanized wire, customizable for various gauges and barb spacing. Adjustable settings ensure tailored barbed wire production. Safety features, including emergency stop buttons, prioritize operator protection. Regular maintenance ensures ongoing safety and operational integrity.

FEATURES:

- WIRE FEEDING MECHANISM
- BARB FORMING UNIT
- TWISTING MECHANISM
- WIRE TENSIONING SYSTEM
- SPEED CONTROL
- SAFETY FEATURES

MOTOR POWER	3.0 KW
OUTPUT	150-200KGS/H
WEIGHT	1500KGS
BARB SPACE	3"4"5
RATED VOLTAGE	380V,50HZ (TRANSFORMER)
STRAND DIAMETER	1.8-3.0MM
WIRE DIAMETER	1.7-2.8MM